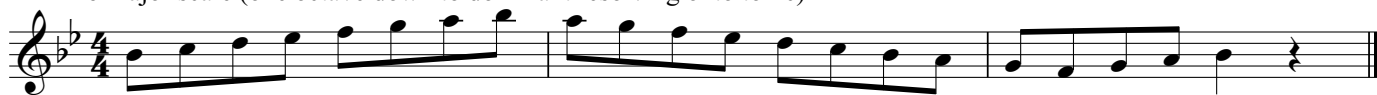


# Scales & Arpeggios from Memory

For the examination, the candidate should be asked to perform all the following scales and arpeggios from memory. They should perform each scale and arpeggio either tongued or slurred as requested by the teacher. The teacher should aim for an even distribution of articulations. All tempi given are minimum speeds.

♩=72

Bb major scale (one octave down to dominant resolving onto tonic)



A major scale 12th



Ab major scale 12th



F harmonic minor scale - 12th (only 1 version harmonic or melodic required)



F melodic minor scale - 12th



♩=36

G Chromatic - 12th



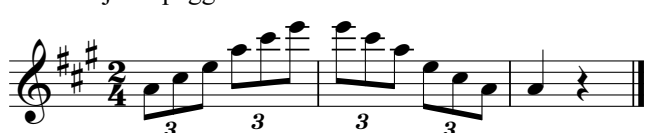
♩=50

Dominant 7th in C

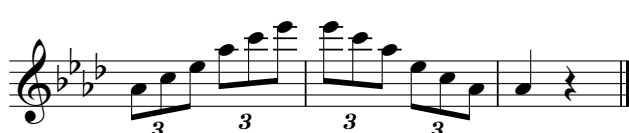


♩=100

A major arpeggio - 12th



Ab major arpeggio - 12th



Bb major arpeggio - down to dominant



F minor arpeggio - 12th

