

### Scales & Arpeggios from Memory

For the examination, the candidate should be asked to play all the following scales and arpeggios from memory. All scales and arpeggios should be played legato. All tempi given are minimum speeds.

#### Scales ♩ = 104

E major, two octaves, hands together

Ab major, two octaves, hands together

C# harmonic minor, two octaves, hands together

F melodic minor, two octaves, hands together

#### Contrary motion scales

Eb major, two octaves, dotted rhythm, hands together

Chromatic Scale, two octaves, hands together (starting with C in LH and E in RH)

#### Arpeggios ♩ = 80

Ab major, two octaves, hands together

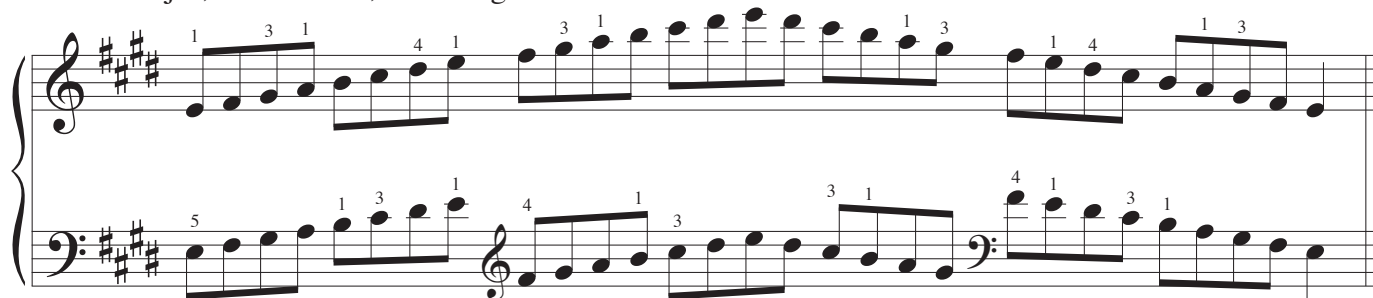
F minor, two octaves, hands together

# Scales & Arpeggios

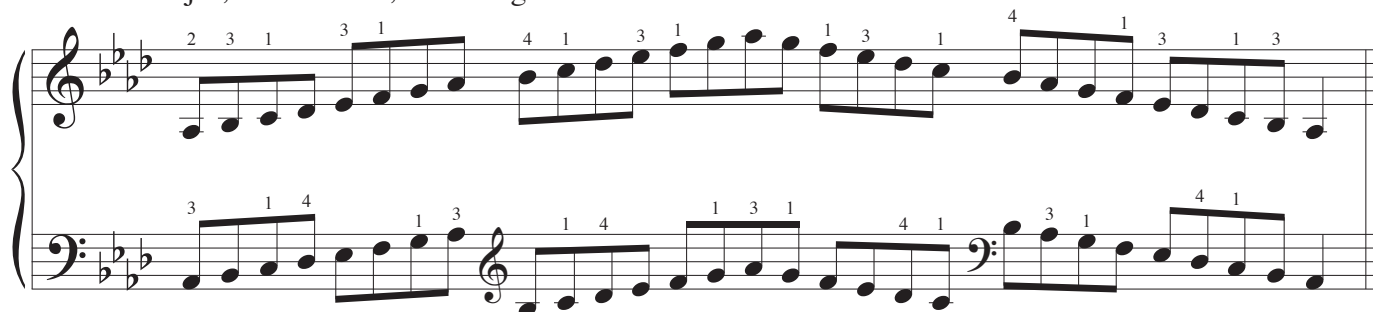
For the examination, the candidate should be asked to play all the following scales and arpeggios from memory. All scales and arpeggios should be played legato. All tempi given are minimum speeds.

Scales ♩ = 104

E major, two octaves, hands together



A♭ major, two octaves, hands together



C# harmonic minor, two octaves, hands together



F melodic minor, two octaves, hands together



## Scales &amp; Arpeggios

## Contrary Motion

Eb major, two octaves, dotted rhythm, hands together

Two staves of music showing the Eb major scale (three flats) for two octaves. The right hand (RH) plays an ascending scale starting on Eb, and the left hand (LH) plays a descending scale starting on Eb. The rhythm is dotted quarter notes. Fingering is indicated by numbers 1-4 above or below the notes.

Chromatic, two octaves, hands together (starting with C in LH and E in RH)

Two staves of music showing a chromatic scale for two octaves. The right hand (RH) starts on E and the left hand (LH) starts on C. Both hands play ascending and then descending chromatic lines. Fingering is indicated by numbers 1-3.

Continuation of the chromatic scale from the previous block, showing the final two octaves of the exercise. Fingering is indicated by numbers 1-3.

## Arpeggios ♩ = 80

Ab major, two octaves, hands together

Two staves of music showing Ab major arpeggios (three flats) for two octaves. The right hand (RH) plays ascending arpeggios starting on Ab, and the left hand (LH) plays descending arpeggios starting on Ab. The time signature is 4/4. Fingering is indicated by numbers 1-4.

F minor, two octaves, hands together

Two staves of music showing F minor arpeggios (three flats) for two octaves. The right hand (RH) plays ascending arpeggios starting on F, and the left hand (LH) plays descending arpeggios starting on F. The time signature is 4/4. Fingering is indicated by numbers 1-5.