

Scales & Arpeggios from Memory

For the examination, the candidate should be asked to play all the following scales, arpeggios and the Five Finger Exercise from memory.

All scales and arpeggios should be played legato: minimum speed ♩ = 60

Scales

B Major, two octaves, hands separately

A harmonic minor, two octaves, hands separately

C major, one octave, hands together

Contrary Motion: C major, two octaves, hands together

Arpeggios

C major, one octave, hands separately

A harmonic, one octave, hands separately

Five Finger Exercise, hands together

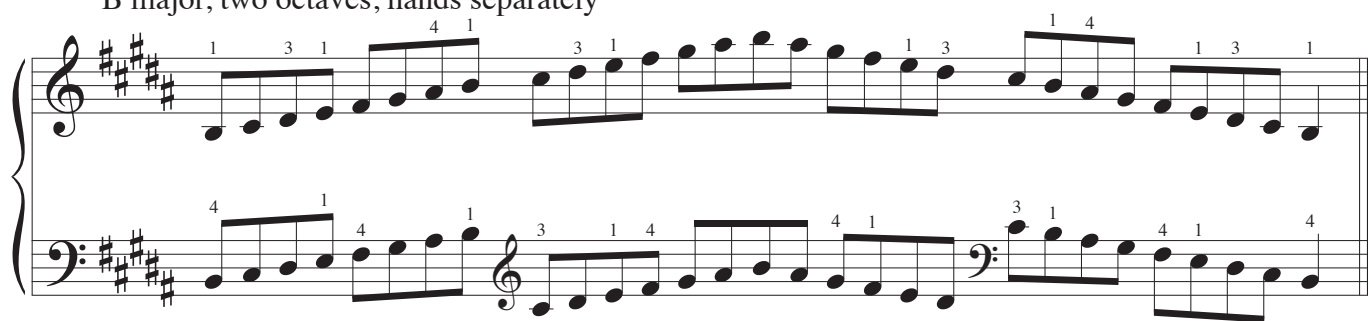
Scales & Arpeggios

For the examination, the candidate should be asked to play all the following scales, arpeggios and the Five Finger Exercise from memory.

All scales and arpeggios should be played legato: minimum speed ♩ = 60

Scales

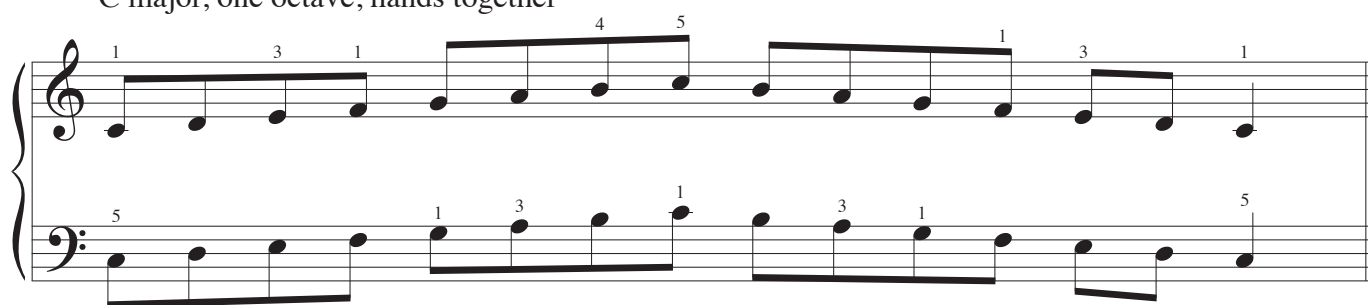
B major, two octaves, hands separately



A harmonic minor, two octaves, hands separately

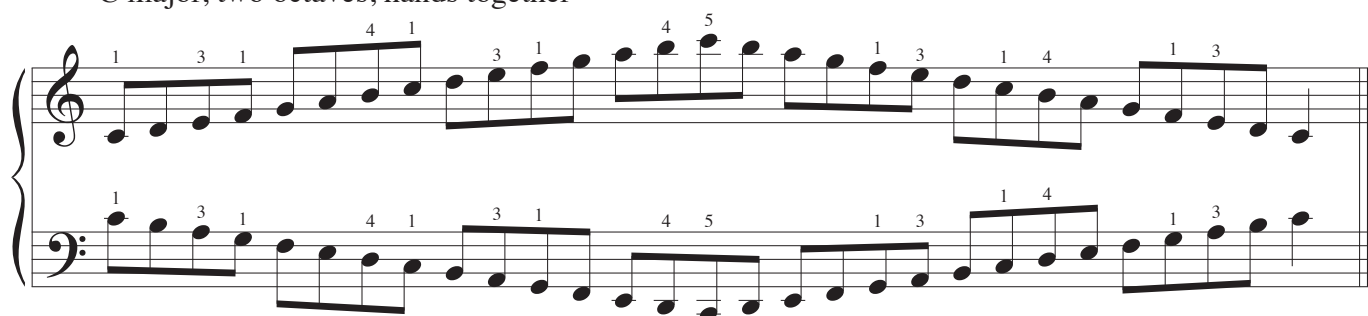


C major, one octave, hands together



Contrary Motion

C major, two octaves, hands together



Scales & Arpeggios

Arpeggios

C major, one octave, hands separately

Musical notation for C major arpeggio, one octave, hands separately. The piece is in 4/4 time. The right hand (treble clef) plays the ascending scale: C4 (quarter), E4 (quarter), G4 (quarter), B4 (quarter), A4 (quarter), G4 (quarter), F4 (quarter), E4 (quarter). The left hand (bass clef) plays the descending scale: C5 (quarter), B4 (quarter), A4 (quarter), G4 (quarter), F4 (quarter), E4 (quarter), D4 (quarter), C4 (quarter). Fingerings are indicated: right hand (1, 2, 3, 4, 3, 2, 1, 2) and left hand (5, 3, 2, 1, 2, 3, 4, 5).

A harmonic minor, one octave, hands separately

Musical notation for A harmonic minor arpeggio, one octave, hands separately. The piece is in 4/4 time. The right hand (treble clef) plays the ascending scale: A3 (quarter), B3 (quarter), C#4 (quarter), D4 (quarter), C#4 (quarter), B3 (quarter), A3 (quarter). The left hand (bass clef) plays the descending scale: A4 (quarter), G#4 (quarter), F#4 (quarter), E4 (quarter), D4 (quarter), C#4 (quarter), B3 (quarter), A3 (quarter). Fingerings are indicated: right hand (1, 2, 3, 4, 3, 2, 1) and left hand (5, 3, 2, 1, 2, 3, 4, 5).

Five Finger Exercise

Hands together

Musical notation for Five Finger Exercise, hands together. The piece is in 4/4 time. The right hand (treble clef) plays the ascending scale: C4 (quarter), D4 (quarter), E4 (quarter), F4 (quarter), G4 (quarter), A4 (quarter), B4 (quarter), A4 (quarter), G4 (quarter), F4 (quarter), E4 (quarter), D4 (quarter), C4 (quarter). The left hand (bass clef) plays the descending scale: C5 (quarter), B4 (quarter), A4 (quarter), G4 (quarter), F4 (quarter), E4 (quarter), D4 (quarter), C4 (quarter), B3 (quarter), A3 (quarter), G3 (quarter), F3 (quarter), E3 (quarter). Fingerings are indicated: right hand (1, 3, 2, 4, 3, 5, 4, 2) and left hand (5, 3, 4, 2, 3, 1, 2, 4).