

Scales & Arpeggios from Memory

For the examination, the candidate should be asked to perform the nine starred (**) scales and arpeggios below plus any other two items from memory. They should perform each scale and arpeggio either tongued or slurred as requested by the teacher. The teacher should aim for an even distribution of articulations. All tempi given are minimum speeds.

♩=108

D major scale - 12th



** Eb major scale - 12th



Ab major scale - 1 octave (down to dominant, resolve onto tonic)



C harmonic minor scale - 2 octaves



** C# melodic minor scale - 12th



** F# melodic minor scale - 1 octave (down to dominant, resolve onto tonic)



** D major thirds - 12th



♩=54

** D# chromatic scale - 12th

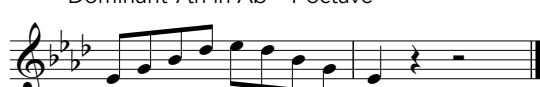


♩=99

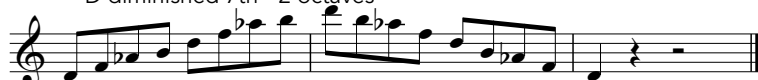
Dominant 7th in F - 2 octaves



** Dominant 7th in Ab - 1 octave



** D diminished 7th - 2 octaves



♩=66

D major arpeggio - 12th



** Eb major arpeggio - 12th



Ab major arpeggio - 1 octave



** C minor arpeggio - 2 octaves



C# minor arpeggio - 12th



F# minor arpeggio - 1 octave

