

Alternative to Scales from Memory

The following do not need to be played from memory. For the examination, perform the nine starred (**) scales and arpeggios below plus any two other items. All tempi given are minimum speeds.

♩=108

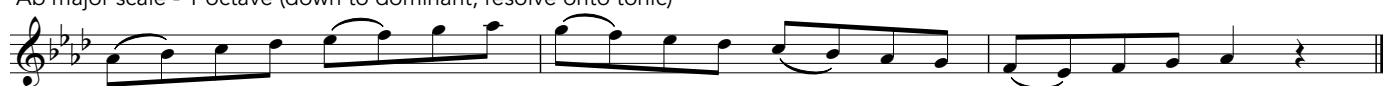
D major scale - 12th



** Eb major scale - 12th



Ab major scale - 1 octave (down to dominant, resolve onto tonic)



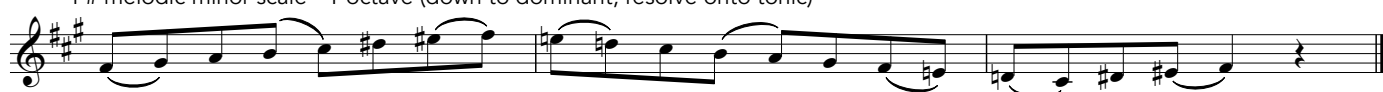
C harmonic minor scale - 2 octaves



** C# melodic minor scale - 12th



** F# melodic minor scale - 1 octave (down to dominant, resolve onto tonic)



** D major thirds - 12th



♩=54

** D# chromatic scale - 12th

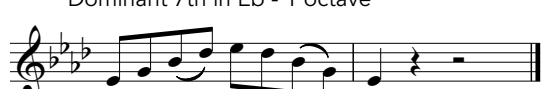


♩=99

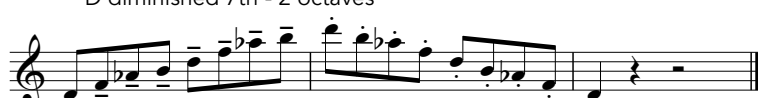
Dominant 7th in F - 2 octaves



** Dominant 7th in Eb - 1 octave



** D diminished 7th - 2 octaves



♩=66

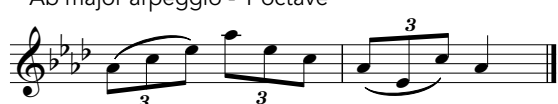
D major arpeggio - 12th



** Eb major arpeggio - 12th



Ab major arpeggio - 1 octave



** C minor arpeggio - 2 octaves



C# minor arpeggio - 12th



F# minor arpeggio - 1 octave

