

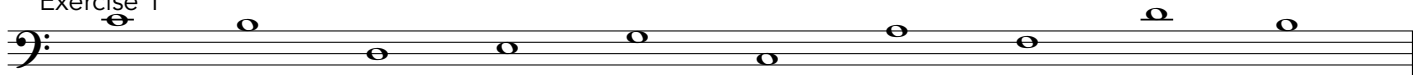
MTB Exams - Singing Skills

Grade 8 (Bass Clef)

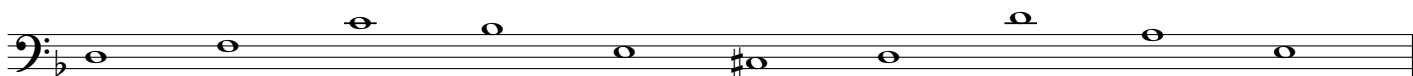
Section A

I will give you the starting note for each of the following 4 exercises.
Sing back the 10 notes to any syllable in your own time. (Sound starting note)

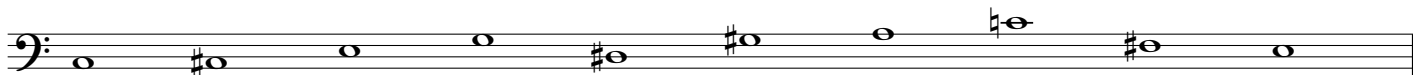
Exercise 1



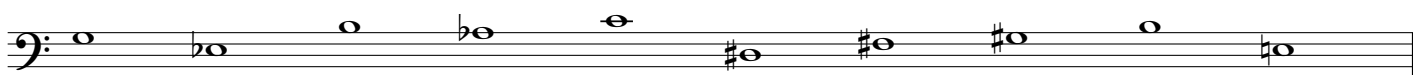
Exercise 2



Exercise 3



Exercise 4



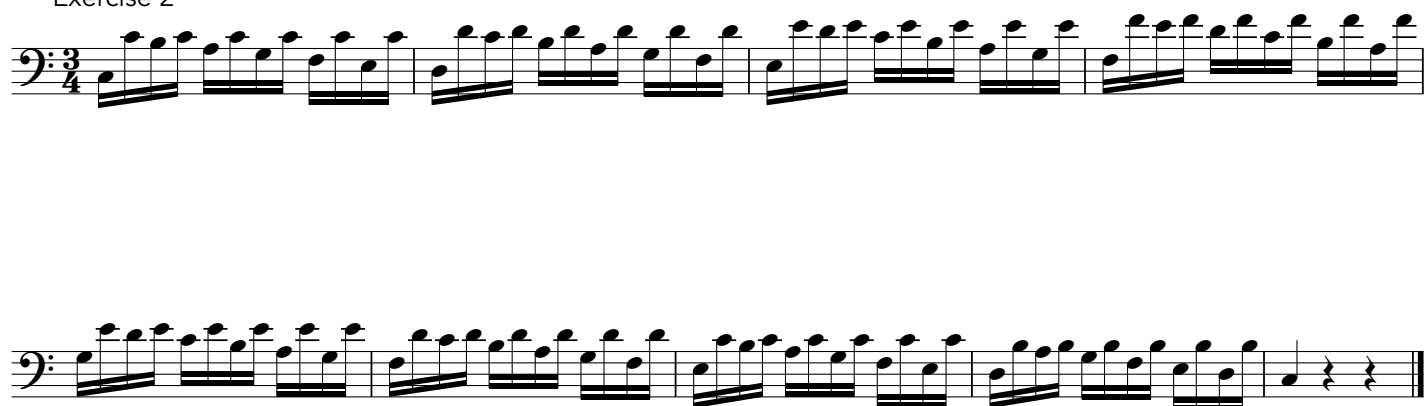
Section B

I will play a piano accompaniment and you will sing the following 3 exercises to any suitable vowel.
Before each, you will hear a bar of metronome and a bar of count.
Your starting note is '...' (Sound note and begin count)

Exercise 1 (unaccompanied - sound starting note)



Exercise 2



Accompaniment for Ex. 2



Exercise 3



Accompaniment for Ex. 3

