

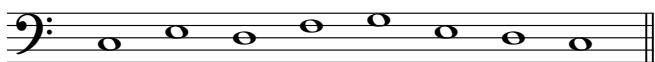
MTB Exams - Singing Skills

Grade 2 (Bass Clef)

Section A

I will give you the starting note for each of the following 4 exercises.
Sing back the 8 notes to any syllable in your own time. (Sound starting note)

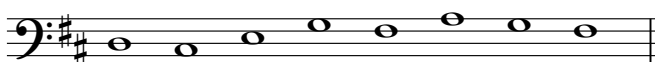
Exercise 1



Exercise 2



Exercise 3



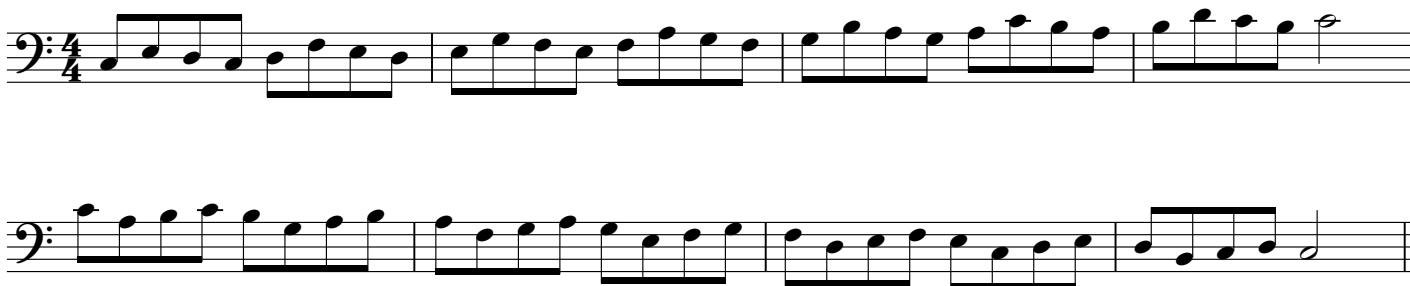
Exercise 4



Section B

I will play a piano accompaniment and you will sing the following 2 exercises.
Before each, you will hear a bar of metronome and a bar of count.
Your starting note is '...' (Sound note and begin count)

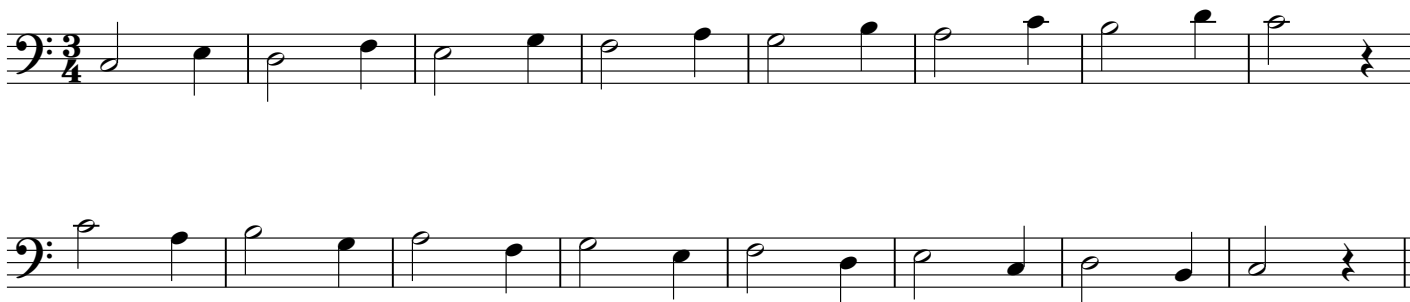
Exercise 1



Ex. 1 Accompaniment



Exercise 2



Ex. 2 Accompaniment

