

# MTB Exams Sight Singing Skills

## Grade 8

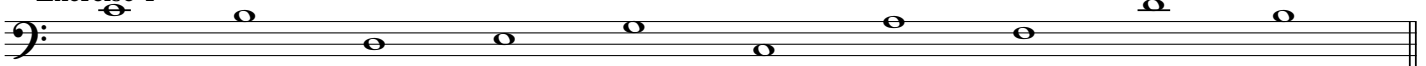
The candidate should practice all these exercises in sections A and B below as well as all the rhythm exercises on the Reading Skills sheet as part of their preparation for this grade.

During the exam itself complete sections A and B below and *also* the reading skills for this grade.

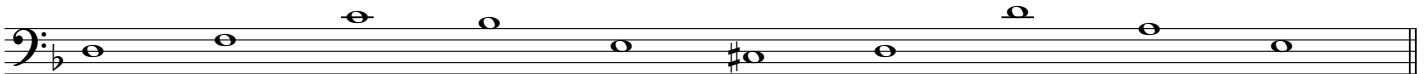
### Section A

For the exam, ask the candidate to perform *all* of the ten note exercises below to any syllable.  
Give the starting note for each exercise and ask the candidate to sing all 10 notes.

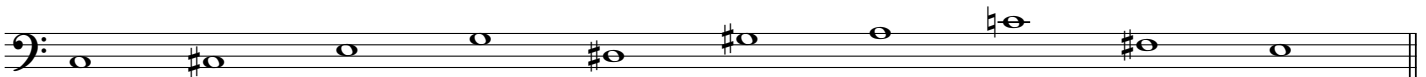
Exercise 1



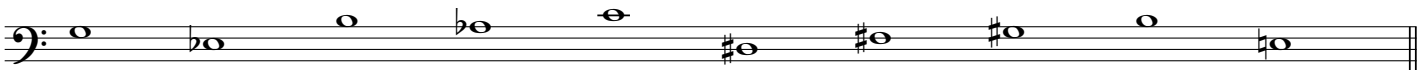
Exercise 2



Exercise 3



Exercise 4



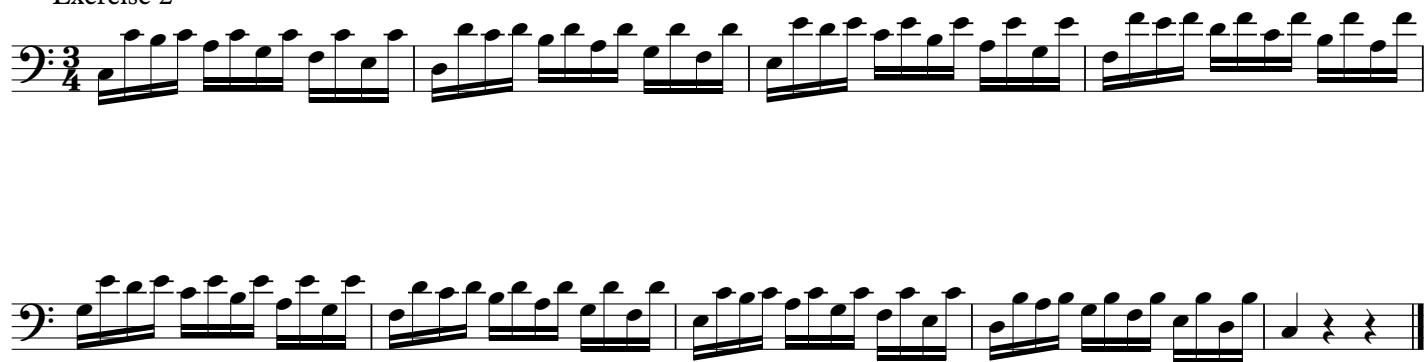
### Section B

For the exam, ask the candidate to sing the three exercises below to any suitable vowel.  
The teacher should play the accompaniment line (where relevant) on any suitable instrument for each exercise.

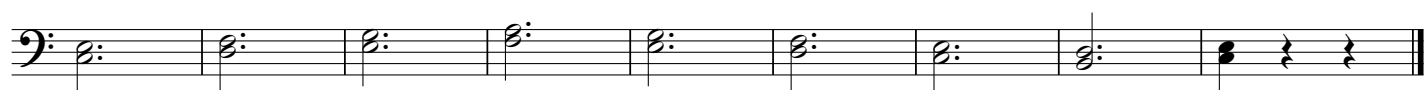
Exercise 1 (unaccompanied - give the starting note)



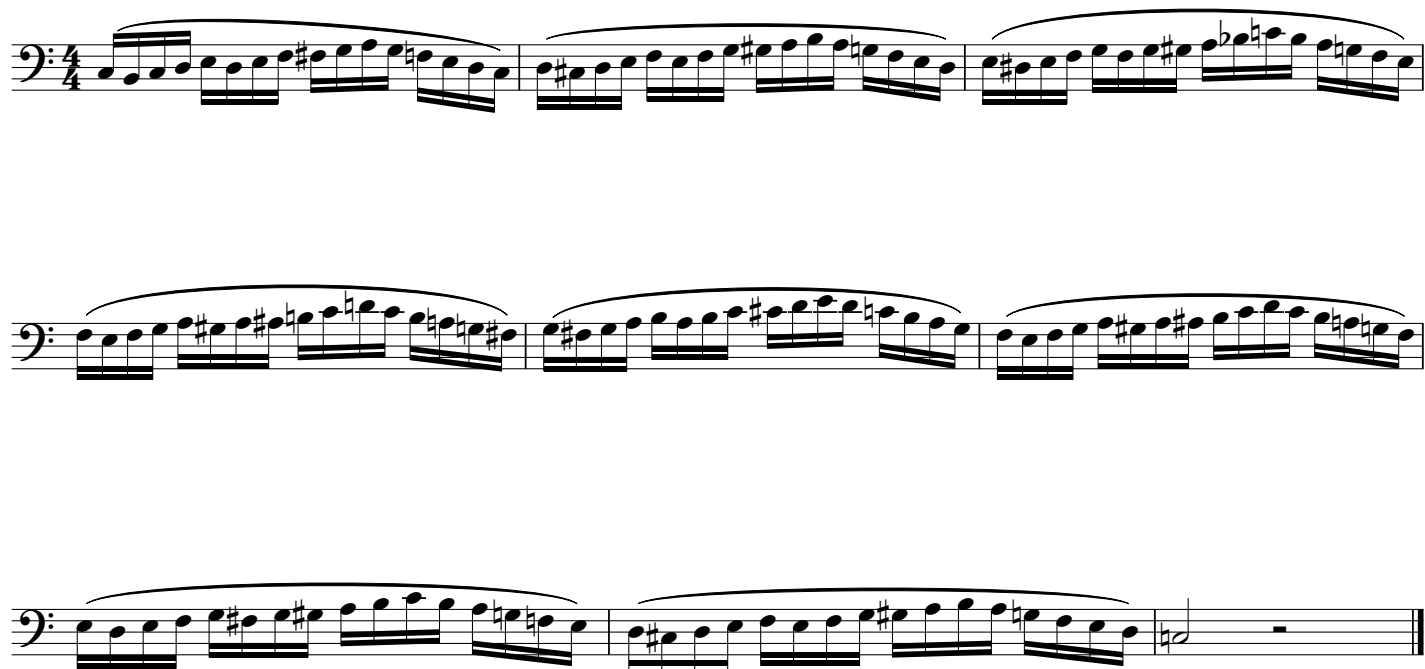
## Exercise 2



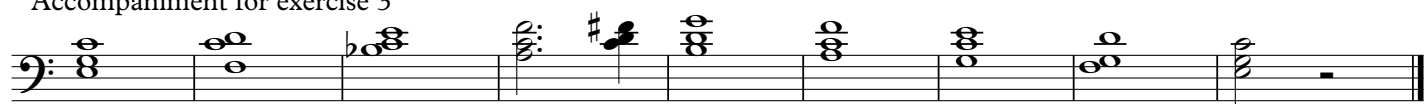
## Accompaniment for exercise 2



## Exercise 3



## Accompaniment for exercise 3



# MTB Exams - Reading Skills

## Grade 8

Candidates should practice all six clapping exercises below as part of their preparation for this grade.

For the exam itself, the candidate should be asked to perform either exercises 1,3 and 5 or exercises 2,4 and 6 (as requested by the teacher). The selected exercises should be performed at different tempi, observing any marked dynamics.

**The pupil should clap the upper part while the teacher claps the lower part.**

1

pupil

teacher

3/8 3/4 5/4 3/4 3/8

2

3/2 3/2

3/2 3/2 3/2 3/2

3

6/16 6/16

4

Musical score for system 4, measures 1-4. The system consists of two staves. The top staff has a treble clef and a 7/8 time signature. The bottom staff has a bass clef and a 7/8 time signature. The music features eighth and sixteenth notes with various rests and ties.

5

Musical score for system 5, measures 1-4. The system consists of two staves. The top staff has a treble clef and a 4/4 time signature. The bottom staff has a bass clef and a 4/4 time signature. The music includes triplets and quintuplets, with dynamic markings *f* and *p*.

Musical score for system 6, measures 1-4. The system consists of two staves. The top staff has a treble clef and a 4/4 time signature. The bottom staff has a bass clef and a 4/4 time signature. The music includes quintuplets and triplets.

Musical score for system 7, measures 1-4. The system consists of two staves. The top staff has a treble clef and a 4/4 time signature. The bottom staff has a bass clef and a 4/4 time signature. The music includes triplets and quintuplets.

6

Musical score for system 8, measures 1-4. The system consists of two staves. The top staff has a treble clef and a 9/4 time signature. The bottom staff has a bass clef and a 9/4 time signature. The music features dotted half notes and quarter notes.

Musical score for system 9, measures 1-4. The system consists of two staves. The top staff has a treble clef and a 9/4 time signature. The bottom staff has a bass clef and a 9/4 time signature. The music includes eighth and sixteenth notes with rests.

Musical score for system 10, measures 1-4. The system consists of two staves. The top staff has a treble clef and a 9/4 time signature. The bottom staff has a bass clef and a 9/4 time signature. The music includes eighth and sixteenth notes with rests.